

PS Series

Type 1,2 (AC Lines)



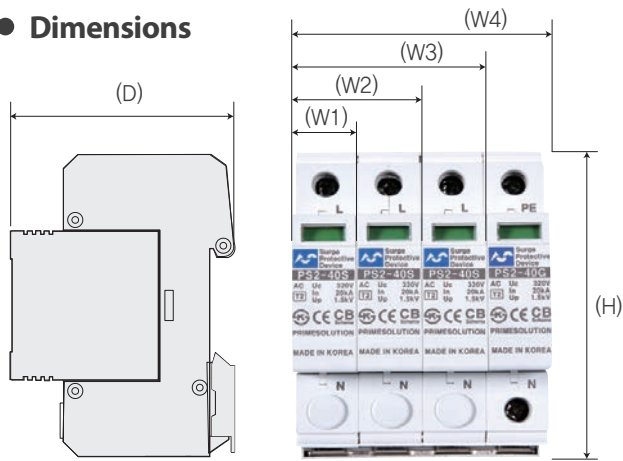
Specifications

- Frequency (Hz)	: 50/60
- Protection Mode	: L-N / N-PE
- Degree of protection	: IP 20
- Diagnostics	: Green Flag (Protected) / Red Flag (Replace)
- Connection & Mounting Method	: Parallel Connection Type / Wall Mounting
- Internal Disconnecter	: Thermal Runaway Multi-Fusing Protection
- Size of connecting wir	: 10 ~ 16 mm ² (or # 7 ~ 5AWG)
- Optional Functions	: Remote Contact

Model No.		PS2-40S	PS2-40G	PS2-40S2P	PS2-40S/40G
Nominal Voltage Rating		~275 1W+GND		Single-Phase ~275V 2W+GND	
MCOV (Vac)		110 ~ 320			
I_n (kA) -8/20 μ S- / I_{max} (kA) -8/20 μ S-		20 / 40	20 / 40	20 / 40	20 / 40
VPR (Vpk) (kV)	L-N	1.5	1.5	1.5	1.5
	N-G	-	1.5	-	1.5
SCCR (kA)		200	200	200	200

Model No.	PS2-40S3P	PS2-40S3P/40G
Nominal Voltage Rating	Tri-Phase 110~440V 3W+GND	Tri-Phase 110~440V 4W+GND
MCOV (Vac)	110 ~ 320	
I_n (kA) -8/20 μ S- / I_{max} (kA) -8/20 μ S-	20 / 40	20 / 40
VPR (Vpk) (kV)	L-N	1.5
	N-G	1.5
SCCR (kA)	200	200

● Dimensions

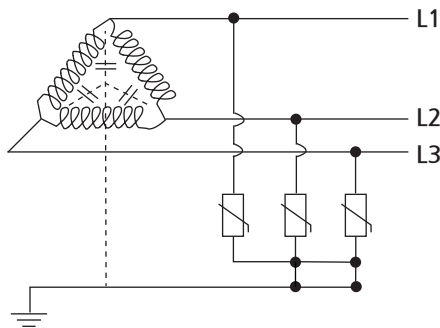


	Size(inch/mm)
W1	0.70 / 18
W2	1.41 / 36
W3	2.12 / 54
W4	2.83 / 72
H	3.54 / 90
D	2.57 / 65.5

● Circuit Diagram

Model No.

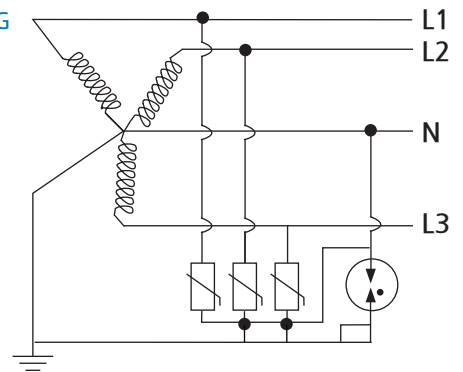
PS2-40S3P



Tri-Phase 110~440V 3W+GND

Model No.

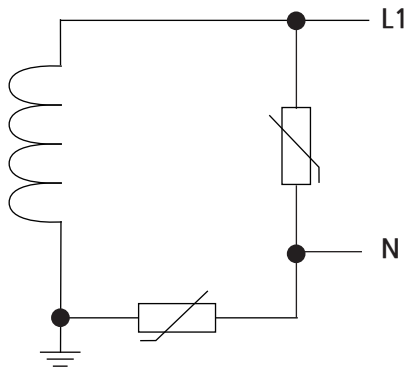
PS2-40S3P/40G



Tri-Phase 110~440V 4W+GND

Model No.

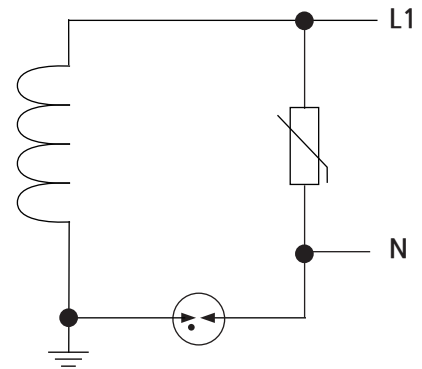
PS2-40S2P



Single-Phase 110~440V 2W+GND

Model No.

PS2-40S/40G



Single-Phase 110~440V 2W+GND



HEAD OFFICE

3960 West Point Loma Blvd. Ste. H San Diego, CA 92110

John Park Director / Technical Support Dept.

Office : +1,858,282,0901 (Ext.701)

Mobile : +1,858,322,3932

johnpark@primepowersolutions.com

www.PrimePowerSolutions.com